



## HDCAM5 High Definition Microscope Camera



# HDCAM5 Camera Features

## Interface

With both HDMI and USB this high definition camera provides options for users.

- HDMI Output
- USB Output
- SD Card Capture



## Accessories

High Definition camera includes:

- HDMI Cable
- USB Cable
- Power Cord
- SD Card
- Software
- USB Mouse for On-Screen HDMI Control

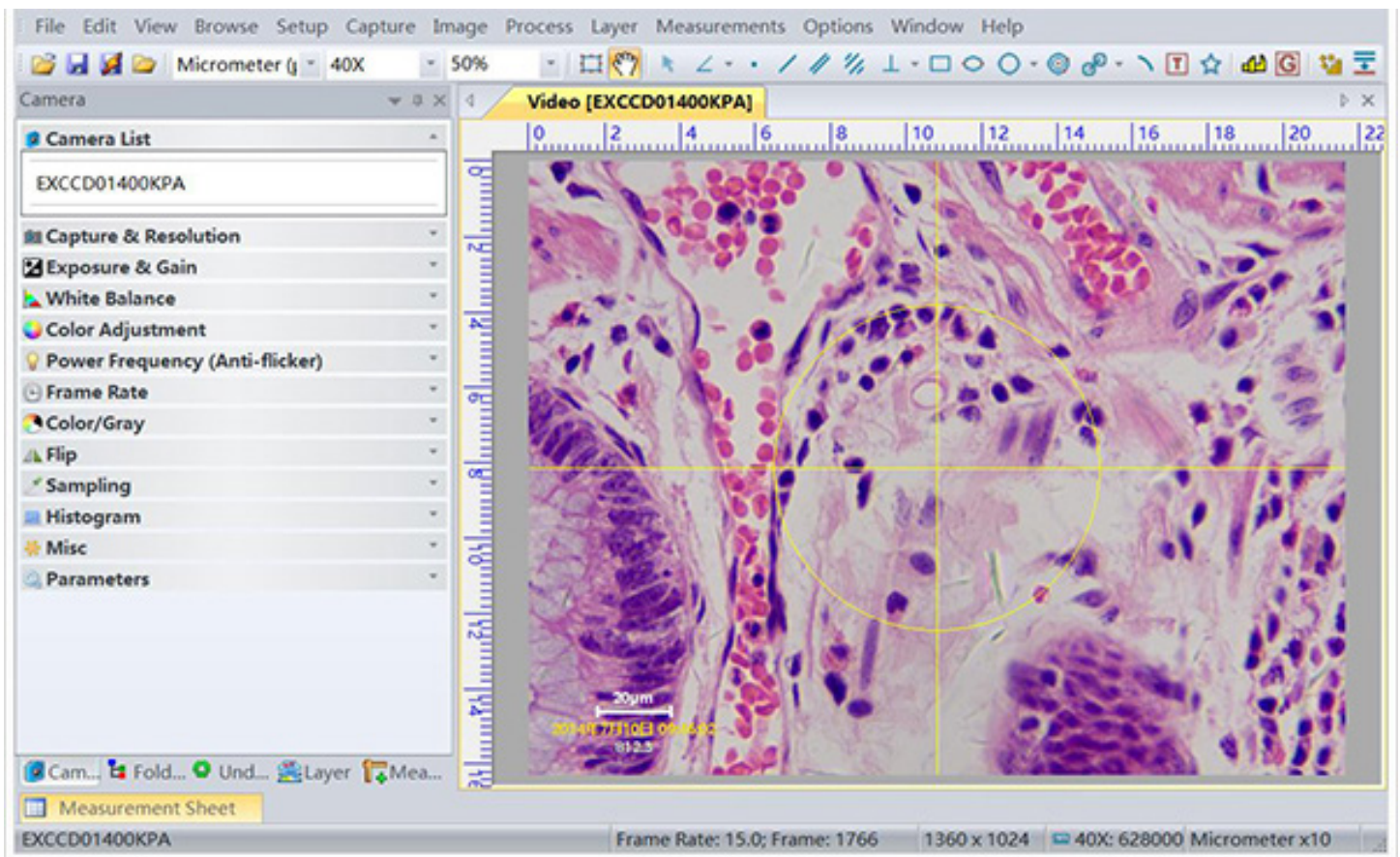
## HD Monitor Connection



HD Camera has a bracket for connecting an optional 12" HD Monitor directly to the camera.

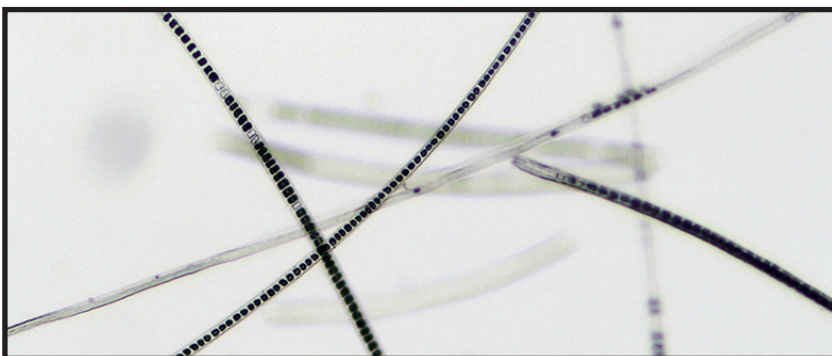


## USB Computer Software Features



When using the camera with USB connection to a desktop or laptop computer, software features include:

- Image Capture, Motion Video Capture (PC only, will not work with MAC)
- Calibration & Image Measurement: Angle, Line, Circle, Ellipse, Rectangle, Arc, Polygon, etc.
- Image Stitching
- Exposure, Gain, White Balance, Color Adjustment, Frame Rate

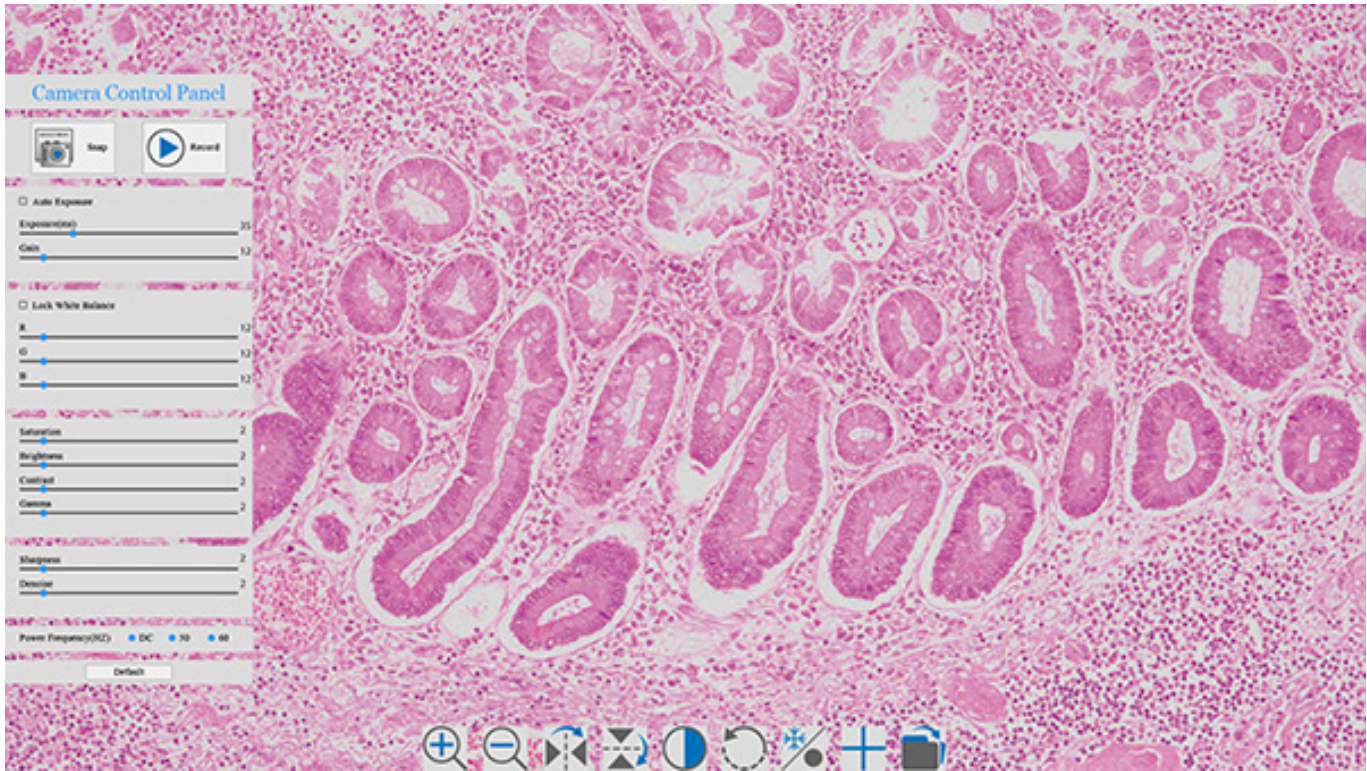


**Rabbit Hair**



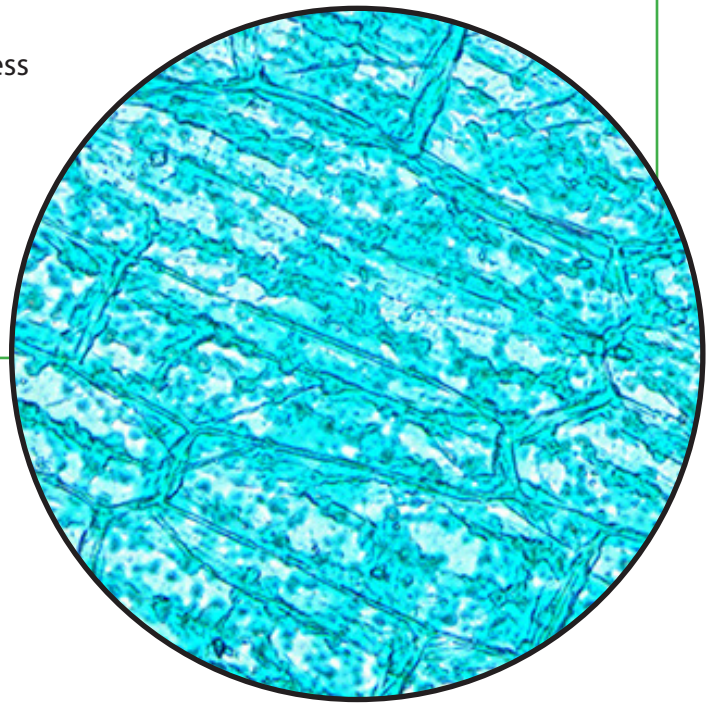
**Pine Leaf c.s.**

## HDMI On-Screen Menu and Features

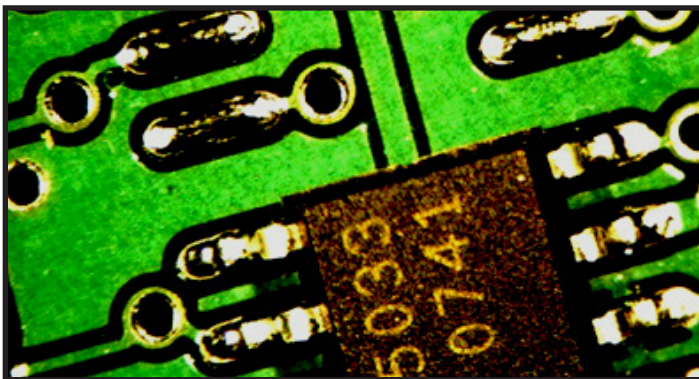


When using the camera with a monitor, on-screen adjustments can be made with the mouse:

- Measurements
- Exposure, Gain, White Balance, Saturation, Brightness
- Sharpness, Denoise, Contrast, Gamma
- Image capture to SD Card
- Video capture to SD Card
- Image rotation
- Zoom
- Cross-Line Imposed Upon Image

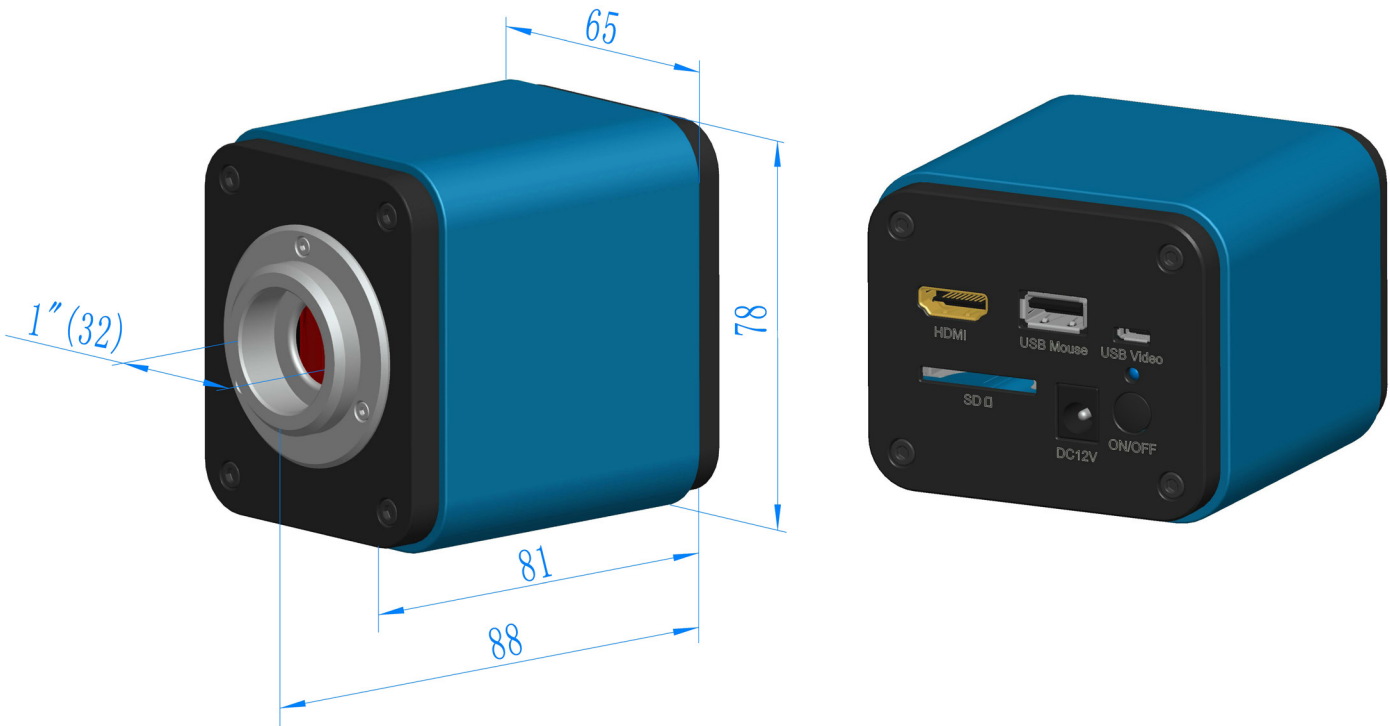


**Hydrilla Verticillata**

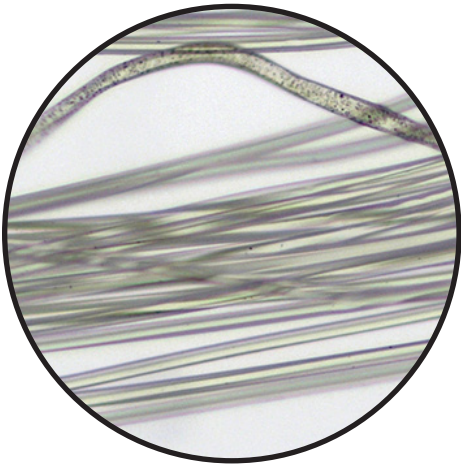


**Printed Circuit**

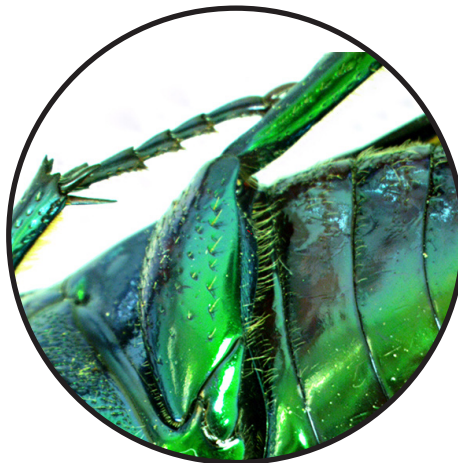
# HDCAM5 Dimensions



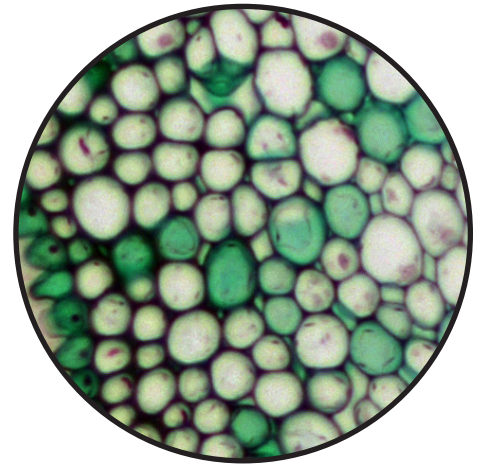
The HD Camera has 1" threads (c-mount) and is made from tough CNC aluminum alloy, ensuring a heavy duty solution. The camera uses a high quality IR-CUT to protect the camera sensor.  
Dimensions: 65mm (2.56") x 78mm (3.07") x 88mm (3.46")



**Silk Fibers**



**June Bug**



**Privet Leaf c.s.**

# HDCAM5 Microscope Camera Specifications

Image Sensor	1/2.8" Sony IMX290(C) (5.57 x 4.13) CMOS
Pixel Size	2.9 x 2.9µm
Resolution	1920 x 1080
Frame Rates	HDMI: 60fps @ 1920 x 1080
	USB: 26fps @ 1920 x 1080
Binning	1x1
Exposure	0.036ms~8s
Output	HDMI
	USB
Sensitivity	1300mv
Power	DC12V/2A, power on/off switch.
HDMI Controls	USB Mouse for on-screen control.
	Image Capture to SD Card, Video recording 1080P 26fps to SD Card.
	Camera control panel: Exposure, Gain, White Balance, Color, Sharpness
	Toolbar: Zoom, Mirror, Comparison, Freeze, Crossline, On-Monitor Measuring
USB Controls	White Balance, Auto White Balance, ROI White Balance
	Capture still images or motion video with software
	USB works with full use of software on PC or Laptop (will not work with MAC)
Software Features	Image capture, still or motion video
	Adjustment of white balance, color, frame rate, exposure, gain, flip, sampling, bit depth, ROI, histogram, darkfield correction.
	Annotation
	Measurement and Calibration: angles, lines, diameter, polygon, etc.
Operating System for Software (USB)	Windows 7, 8, 10 (32 & 64 bit), Linux
PC Requirements (USB)	CPU equal or greater than Intel Core2 2.8GHz
	Memory: 4GB or more
	USB2.0 Port, Display of 19" or larger
Operating Temp	-10~50°C
Storage Temp	-20~60°C
Operating Humidity	30-80%RH
Storage Humidity	10-60%RH
Size	65mm (2.56") W x 88mm (3.46") D x 78mm (3.07") H, 1lb.
Connection	C-Mount Threads