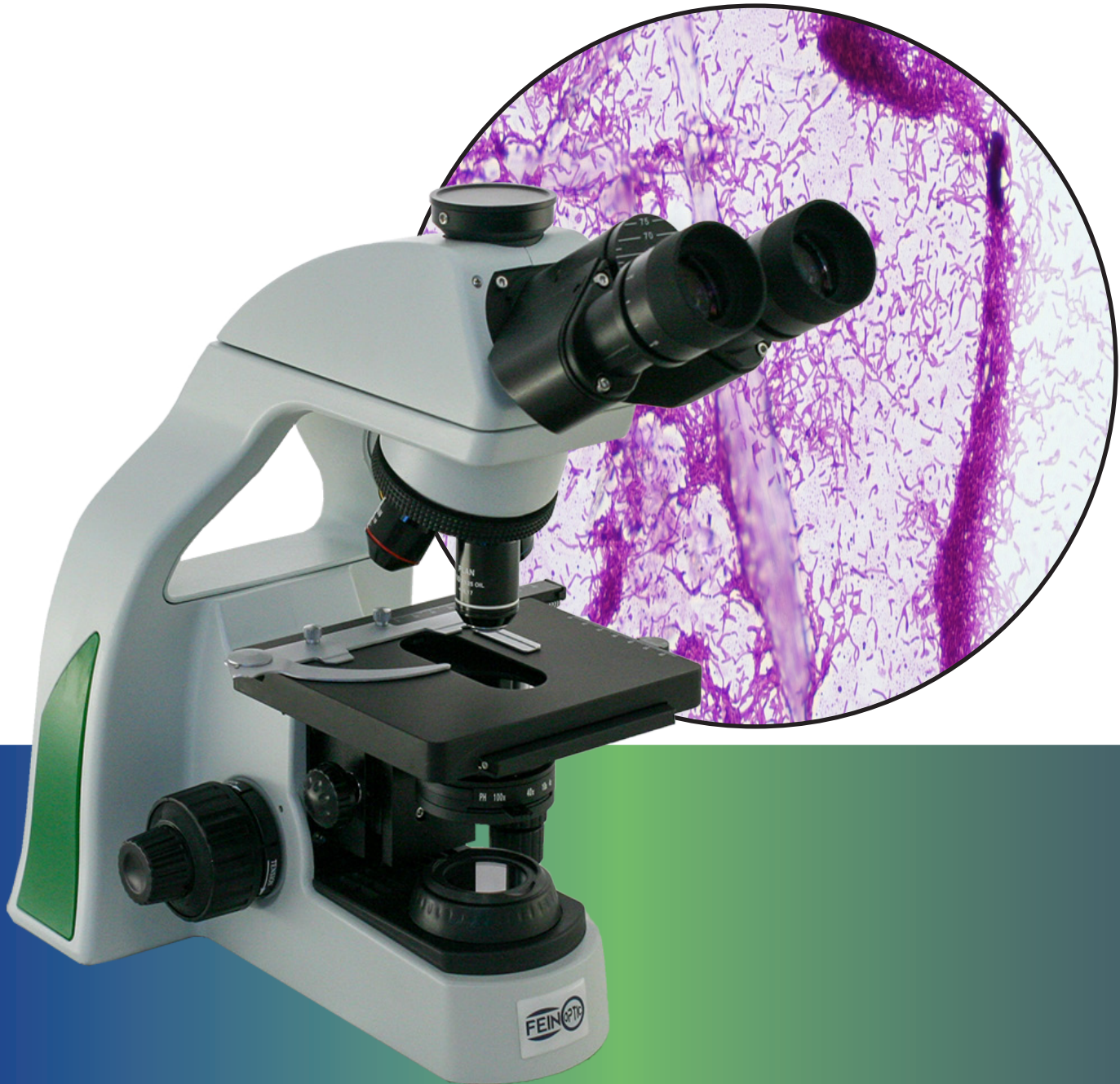


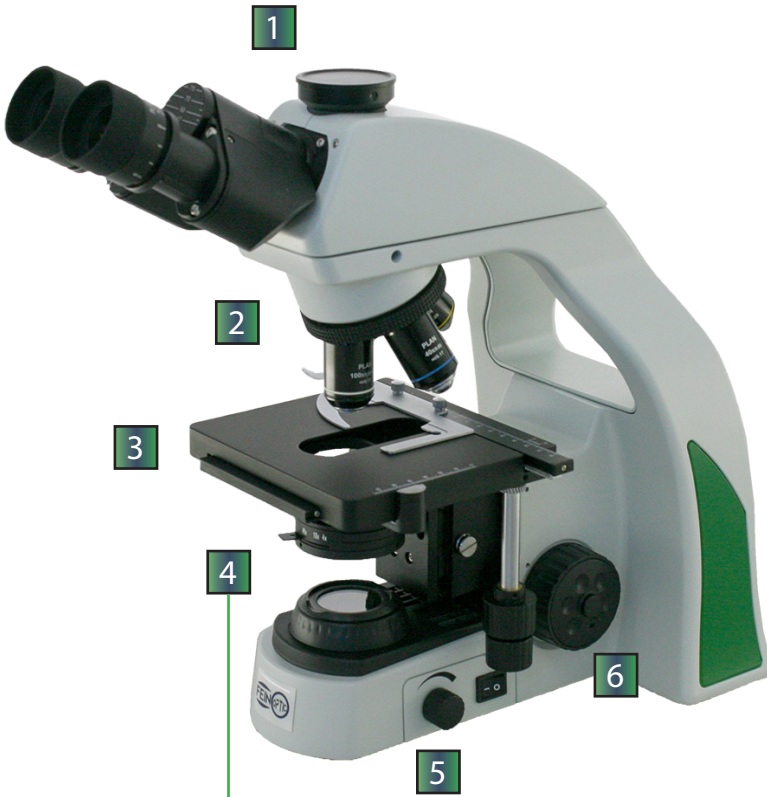


## RB20 Biological Microscope

---



# RB20 Biological Microscope Features



1 Ergonomically inclined trinocular head with eyetubes at 30° places user in the best working position, creating less tension and fatigue. Interpupillary distance is adjustable from 47~75mm. FPL-WF10x high eyepoint eyepieces, FN20. Eyepieces can hold a 20mm diameter reticle.

2 Revolving quadruple nosepiece holds Plan Achromat infinity corrected objectives.

3 150mm x 140mm mechanical stage with X-Y movement range of 76mm x 50mm.

4 NA 1.25 condenser with slot for phase contrast and dark field accessories.



5 3w LED transmitted fixed Koehler illumination.

6 Coaxial coarse and fine focusing adjustment. Coarse focus has upper limit tension adjustment.

# RB20 Biological Microscope Objectives

## Plan Achromat Infinity Corrected Objectives

Objective	N.A.	W.D.
4x	0.10	11.9mm
10x	0.25	12.1mm
40x	0.65	0.36mm
100x oil	1.25	0.21mm



## Eyepieces



Eyepiece	F.N.
10x	20mm



## C-Mount Adapter

C-Mount	Camera Chip Size
0.5x	1/2" - 1/1.8"



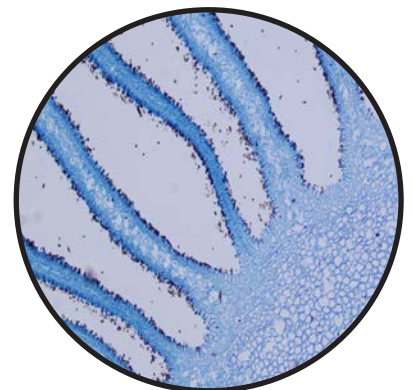
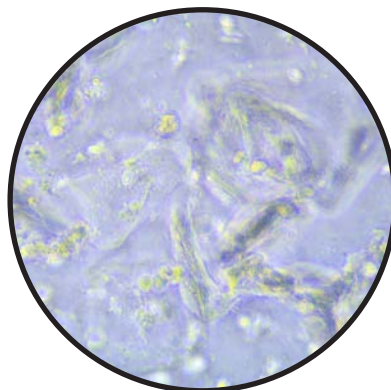
RB20 Biological Microscope system includes the above objectives lenses, and a pair of 10x/20mm eyepieces. Optional simple phase contrast kit available.

## Stable Body and Storage

The triangular design of the microscope body ensures stability and reduces the chance for vibration while viewing samples. The handle on the back of the microscope body encourages safe transportation of the microscope.



A large storage compartment located on the back of the microscope allows for the power cord and other microscope accessories to be securely stored when not in use to keep the working environment neat and tidy. This is a great feature when storing microscopes in cabinets or on carts.



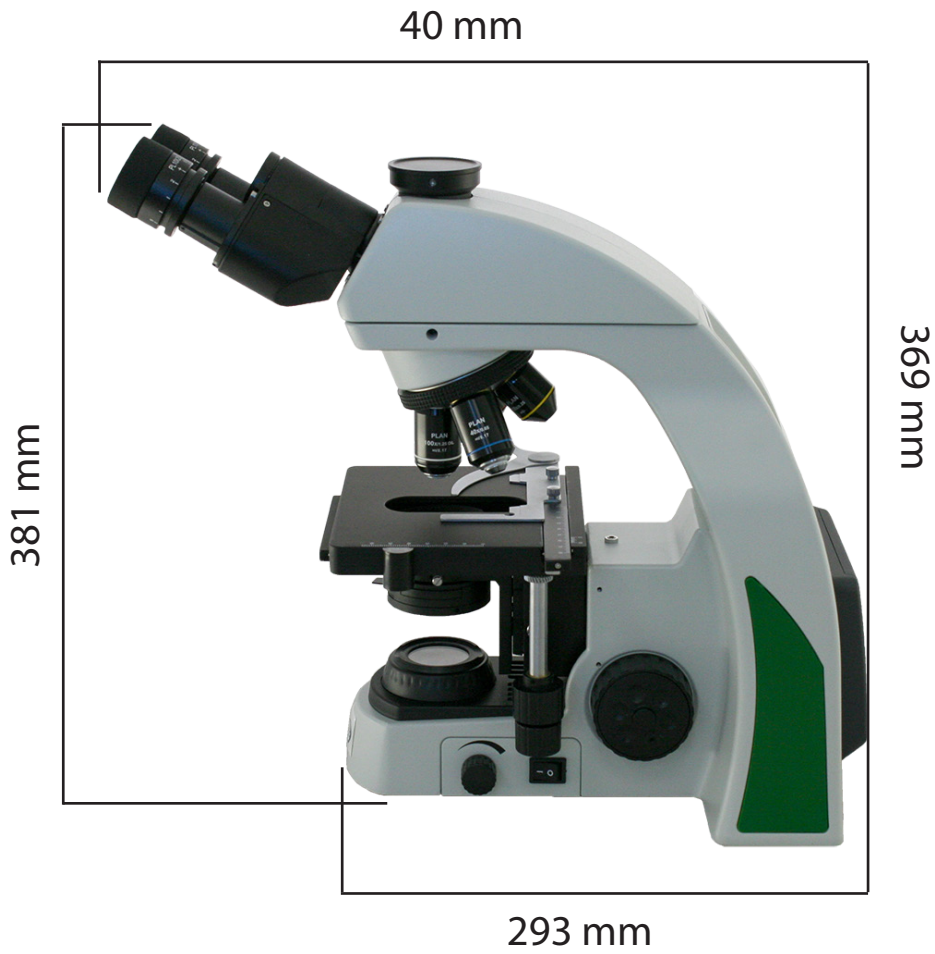
# RB20 Biological Microscope Specifications

Optical System	Infinity Color Corrected Optical System.
Viewing Head	30° inclined Siedentopf trinocular head. Interpupillary distance adjustable 47~75mm.
Eyepieces	Pair of WF10x widefield eyepieces, FN20.
Objective Lenses	Plan Achromat 4x, NA 0.10.
	Plan Achromat 10x, NA 0.25.
	Plan Achromat 40x, NA 0.65, spring loaded.
	Plan Achromat 100x oil, NA 1.25, spring loaded.
Nosepiece	Revolving quadruple nosepiece.
Focus Adjustment	Coaxial coarse and fine focusing adjustment with rack and pinion mechanism. Fine focusing scale 0.002mm.
Body	Automatic voltage sensing power supply 110v~240v, removable power cord.
Stage	150mm x 140mm mechanical stage with low-position controls. Movement range of 76 x 50mm, precision 0.1mm.
Condenser	N.A. 1.25 fixed Koehler illuminator condenser with slot for phase contrast or darkfield slider.
Illumination	3W LED illuminator with rheostat control. 100V~240V.
Simple Phase Contrast	Phase centering telescope, Plan phase contrast PH40x/0.65 objective, Phase slider, and Phase centering screws.
Filters	Microscope accepts 45mm diameter filters.
Size / Weight	26lbs, 9" W x 15.5" D x 14" H.



[info@feinoptic.com](mailto:info@feinoptic.com)

# RB20 Biological Microscope Dimensions



[info@feinoptic.com](mailto:info@feinoptic.com)

