



3DCxM2.3 Microscope Camera & Software Data Sheet

Camera Sensor: Sony IMX185(C) High Sensitivity / Low Noise

- Sensor Size: 1/1.9"
- Pixels: 1920 x 1200 (2.3mp)
- Back-illuminated Exmor Sensor
- Pixel Size: 3.75 x 3.75 μ m

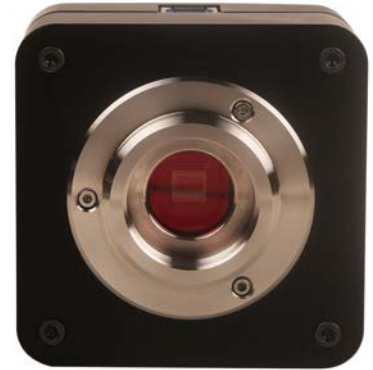
USB3 Connection to Computer

- 38 frames per second at full resolution (1920 x 1200)
- 66 frames per second at 960 x 600

Exposure: 0.244ms - 2 seconds

Binning: 1x1, 2x2

Sensitivity: 1120mv



Software

Image Management:

- Manual / Auto White Balance
- Image Capture: Still or Video
- Exposure: Auto / Manual
- Gain
- Gamma
- Brightness
- Contrast
- Sharpness
- RGB
- Color / Grayscale

Measurement Software:

- Line
- Angle
- Area
- Ellipse
- Circle
- Arc
- Polygon

Extended Depth of Focus

Image Stitching

Direct Show

TWAIN

Operating Systems:

- Windows 7, 8, 10 (32 & 64 bit)
- Mac OSX (includes only basic image capture software, no measurement)
- Linux

Applications:

- Low Light
- Brightfield Biological
- Darkfield
- Phase Contrast
- Reflective Samples
- Industrial Samples
- Documentation