



# 3DCxM8.3 Microscope Camera & Software Data Sheet

Camera Sensor: Sony IMX678(C) High Sensitivity / Low Noise

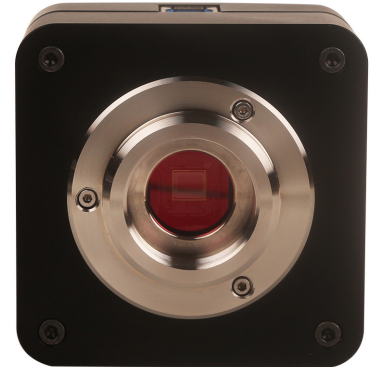
- Sensor Size: 1/1.8"
- Pixels: 3840 x 2160 (8.3mp)
- Back-illuminated Exmor Sensor
- Pixel Size: 2.0 x 2.0µm

USB3 Connection to Computer

- 45 frames per second at full resolution (3840 x 2160)
- 70 frames per second at 1920 x 1080
- Exposure: 0.02ms - 15 seconds

Binning: 1x1, 2x2

Sensitivity: 3541mv



## Software

Image Management:

- Manual / Auto White Balance
- Image Capture: Still or Video
- Exposure: Auto / Manual
- Gain
- Gamma
- Brightness
- Contrast
- Sharpness
- RGB
- Color / Grayscale

Measurement Software:

- Line
- Angle
- Area
- Ellipse
- Circle
- Arc
- Polygon

Extended Depth of Focus

Image Stitching

Direct Show

TWAIN

## Operating Systems:

- Windows 10 or 11
- Mac OSX (includes only basic image capture software, no measurement)
- Linux

## Applications:

- Low Light
- Brightfield Biological
- Darkfield
- Phase Contrast
- Reflective Samples
- Industrial Samples
- Documentation