



HDCAM-WiFi
High Definition WiFi Enabled
Microscope Camera & Software



High Sensitivity Camera

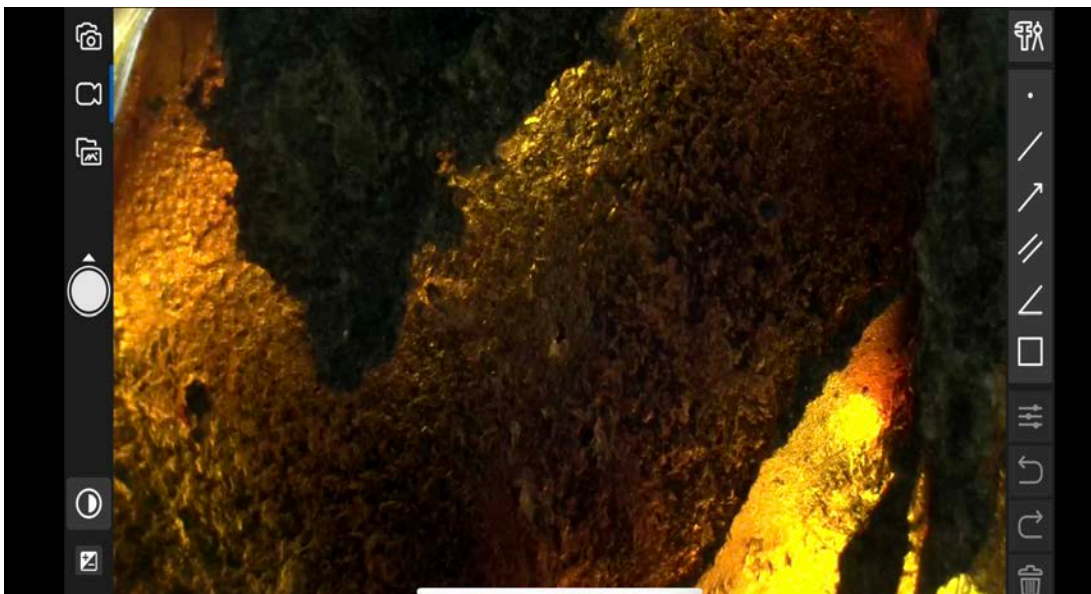
The HDCAM-WiFi microscopy camera emits its own WiFi signal allowing for up to 6 devices to connect to the signal. The **back illuminated color sensor** allows light to be easily absorbed in the active layer on the sensor, resulting in greater quantum efficiency.

- 5 Megapixels
- High Sensitivity
- Low Noise
- USB 2.0 Output
- WiFi enabled for app connection using smart device.
- In-app image capture and measurement.

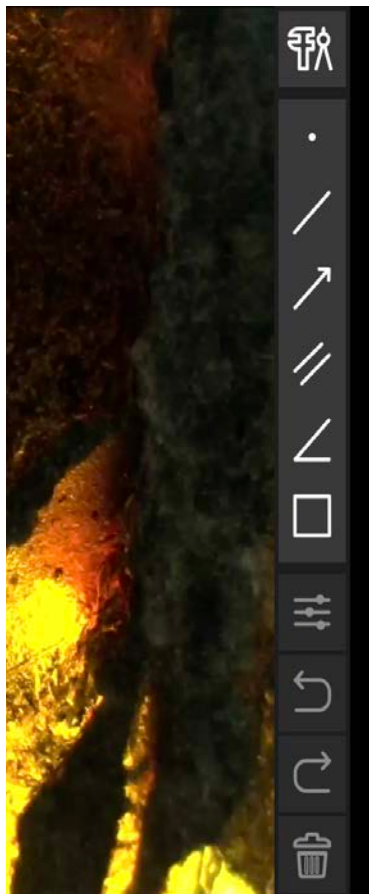


Applications

- Digital classrooms
- Digital laboratory
- Low-Light Applications
- Fluorescence presentations
- Visual inspection
- Quality control
- Applications where there is no space for a computer near microscope.

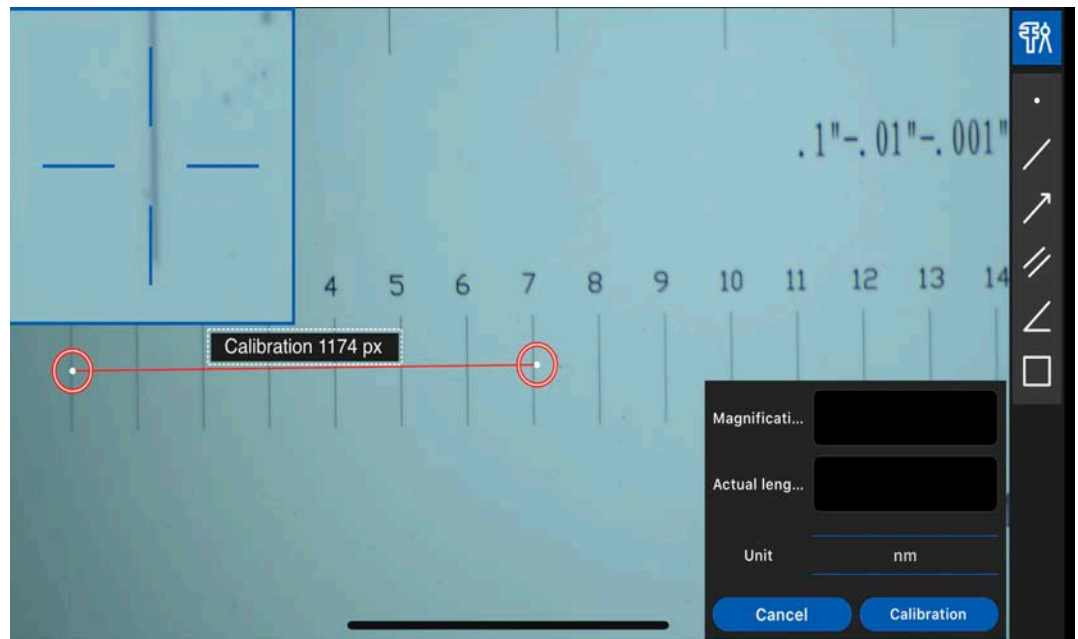


Measurement Options



Measurements are performed using the software App on a smart device. Choose from a large variety of measurement options and tools:

- Single point
- Line
- Arrow
- Two Parallels
- Angle (3 or 4 points)
- Square
- Circle
- Annulus
- Polygon



Calibration

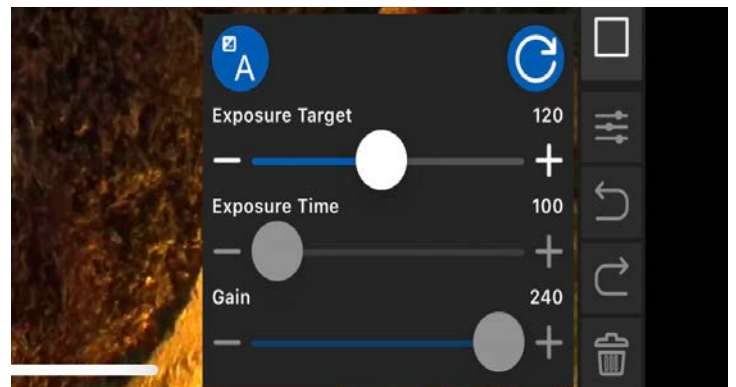
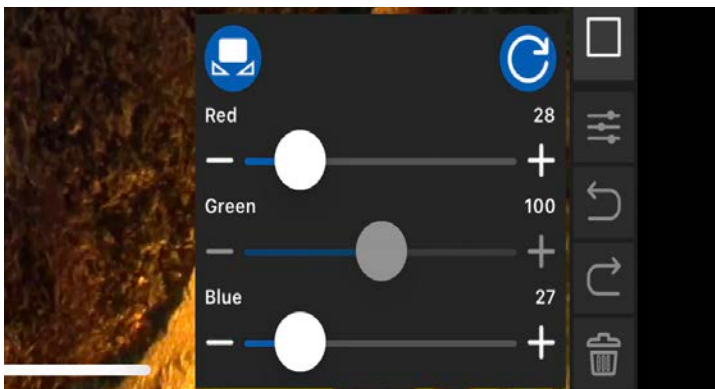
Accurate calibration should be performed for each magnification with a stage micrometer. If using a stereo microscope click stops are the only way to make accurate, repeatable measurements. Available calibration measurement options include:

- Inches (in)
- Meters (m)
- Centimeters (cm)
- Millimeters (mm)
- Microns (μm)
- Nanometers (nm)

Basic Settings

Some of the software's basic features include:

- Exposure, Gain, White Balance
- Saturation, Brightness, Contrast, Gamma
- Color Adjustment
- Power Frequency (anti-flicker)
- Frame Rate Setting
- Image Rotation
- Darkfield Correction
- Image Capture
- Video Capture



HDCAM-WiFi Microscope Camera Specifications

Image Sensor	1/1.8" Sony IMX183(C) (6.22x4.67mm) CMOS
Pixel Size	2.4 x 2.4µm
Resolution	5 Megapixels, 2592 x 1944
Frame Rates	30fps @ 1920 x 1080 HDMI 25fps @ 1920 x 1080 WiFi
Binning	1x1
Exposure	0.03ms~918ms
Output	WiFi, HDMI
Sensitivity	425mv
Power	DC12V/2A, power on/off switch
App / HDMI Controls	White Balance, Auto White Balance
	Capture still images or motion video with in-app software
	Perform calibration and measurements
App Software Features	Image capture and motion video
	Adjustment of white balance, color, frame rate, exposure, gain, flip, sampling, bit depth, ROI, histogram, darkfield correction.
	Annotation
	Measurement and Calibration: angles, lines, diameter, polygon, etc.
Operating System for Software (WiFi)	ToupView or ToupLite App on Windows/Linux/OSX/Android Platform
Maximum Connected Devices	3- 6 devices (depending on environment and connection distance)
Operating Temp	-10~50°C
Storage Temp	-20~60°C
Operating Humidity	30-80%RH
Storage Humidity	10-60%RH
Size	78mm (3.07") W x 77mm (2.76") D x 92mm (3.62") H
Connection	C-Mount Threads

