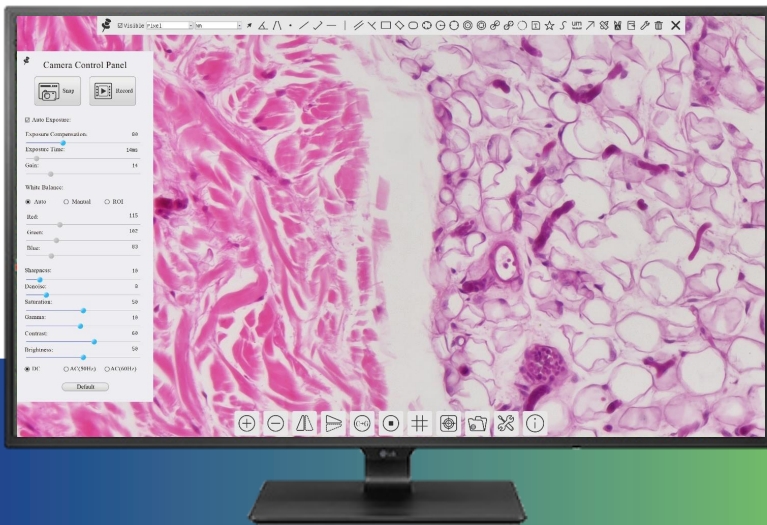




HDCAM6B High Definition 4K Microscope Camera 8 Megapixel Image Capture



4K HDCAM6B Camera Features

Interface

With HDMI, GE (Gigabit Ethernet) and USB this 4K high definition camera provides options for users.

- HDMI Output
- GE (Gigabit Ethernet Output)
- USB Output (USB Flash Drive Capture Option)
- SD Card Capture Option



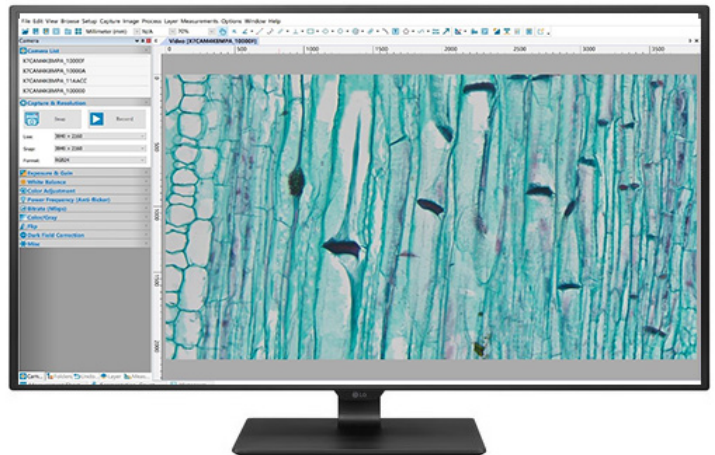
Accessories

4K High Definition camera includes:

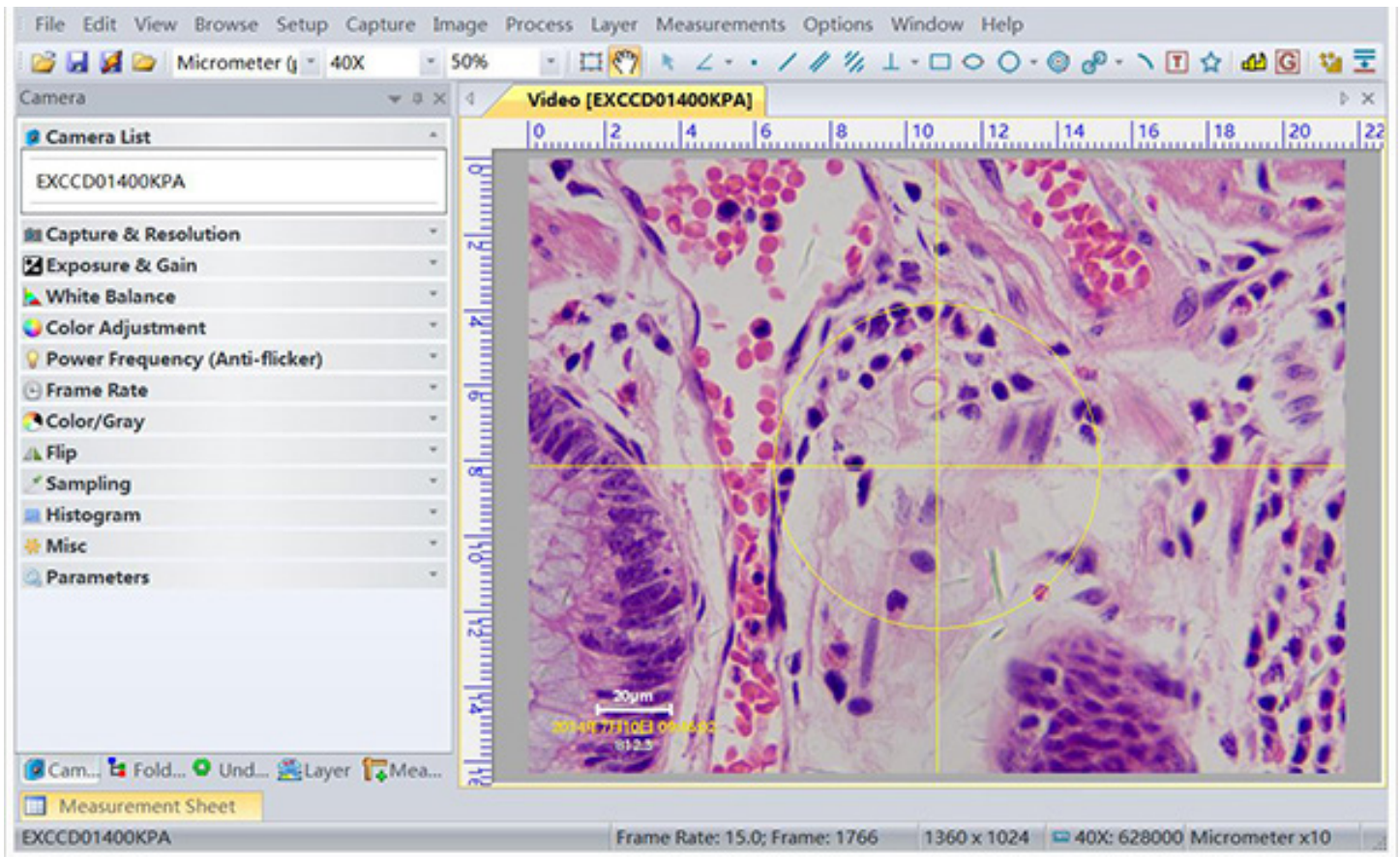
- HDMI Cable
- USB Cable
- Power Cord
- SD Card
- Software
- USB Mouse for On-Screen HDMI Control

4K HDCAM6B Monitor

Connect the HDCAM6B to a 4K capable monitor to experience the true 4K resolution. Use the GE (Gigabit Ethernet) interface to stream live videos to a 4k monitor for multiple applications including interactive online teaching.

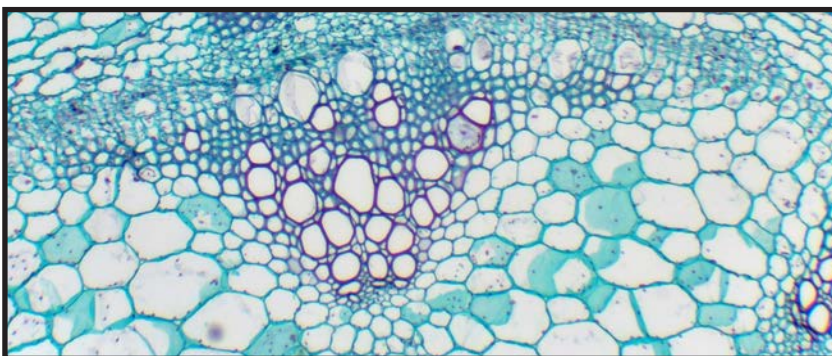


USB Computer Software Features

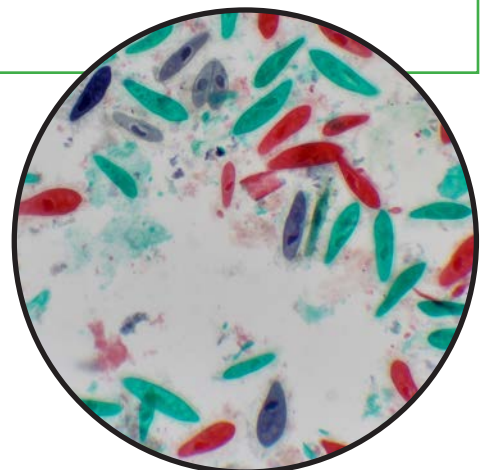


When using the camera with USB connection to a desktop or laptop computer, software features include:

- Image Capture (8 Megapixels), Motion Video Capture (PC only, will not work with MAC)
- Calibration & Image Measurement: Angle, Line, Circle, Ellipse, Rectangle, Arc, Polygon, etc.
- Image Stitching
- Exposure, Gain, White Balance, Color Adjustment, Frame Rate

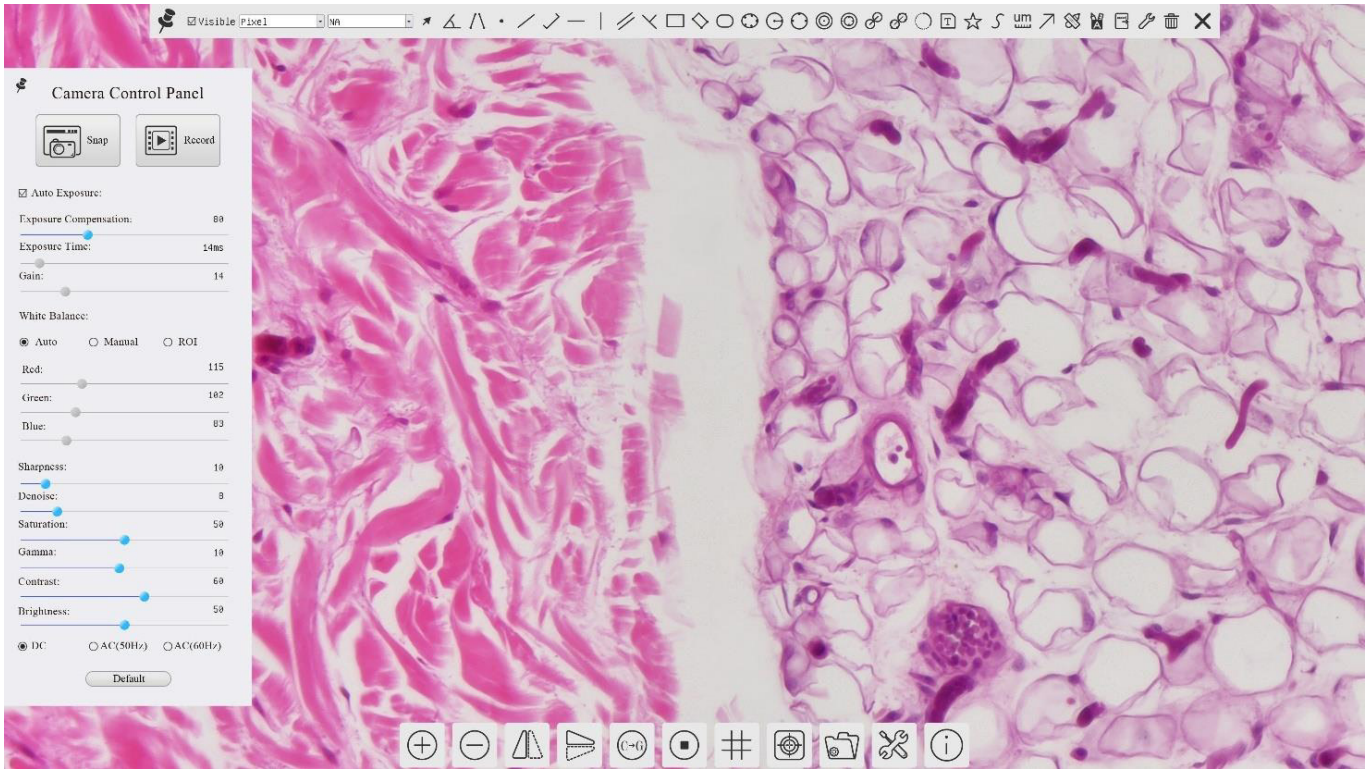


Sunflower Stem CS



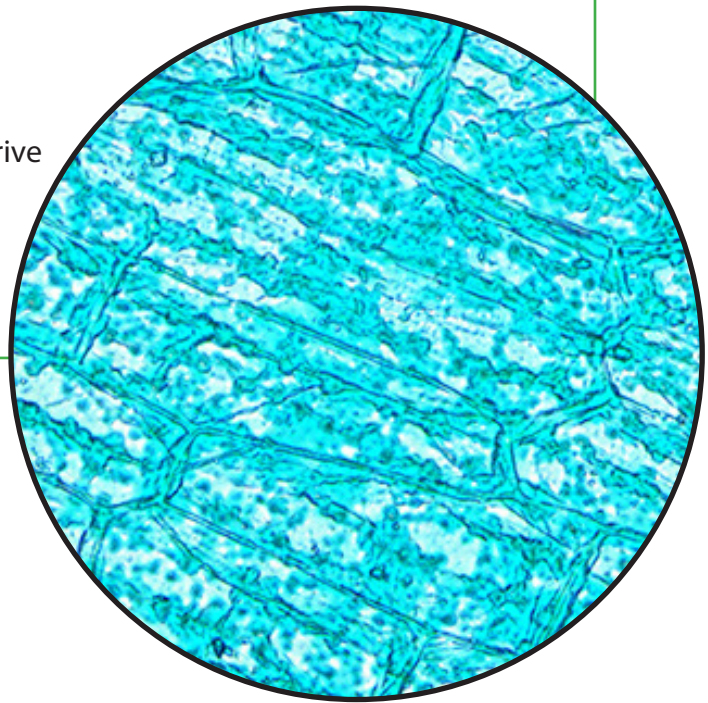
Paramecium WM

HDMI On-Screen Menu and Features

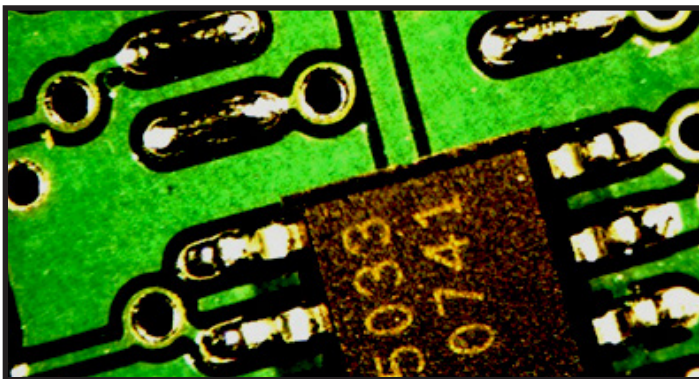


When using the camera with a monitor, on-screen adjustments can be made with the mouse:

- Measurements
- Exposure, Gain, White Balance, Saturation, Brightness
- Sharpness, Denoise, Contrast, Gamma
- Image capture (8 Megapixels) to SD Card or USB flash drive
- Video capture to SD Card
- Image rotation
- Zoom
- Cross-Line Imposed Upon Image

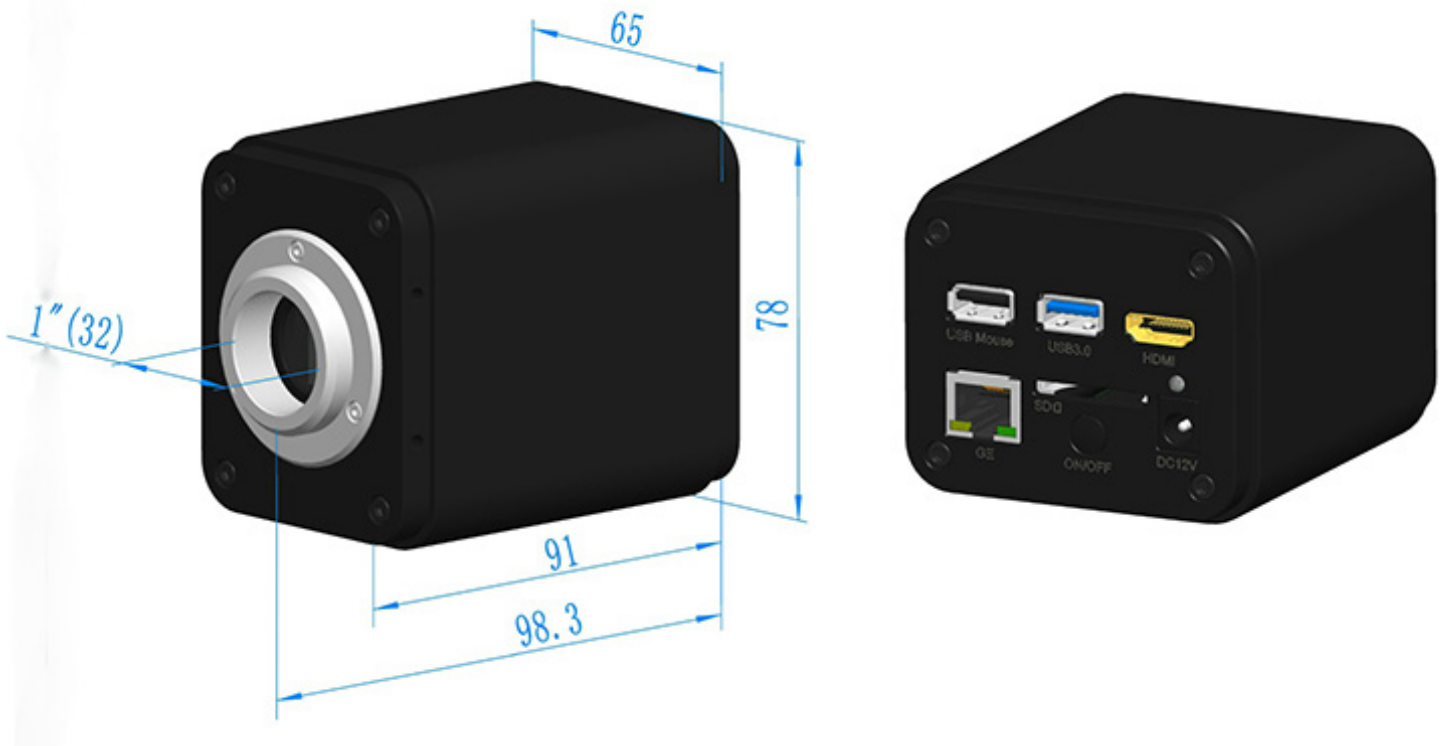


Hydrilla Verticillata

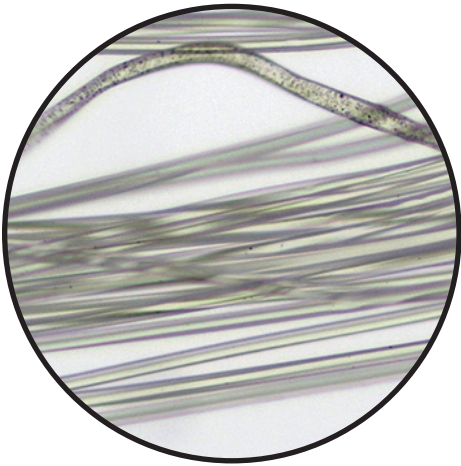


Printed Circuit

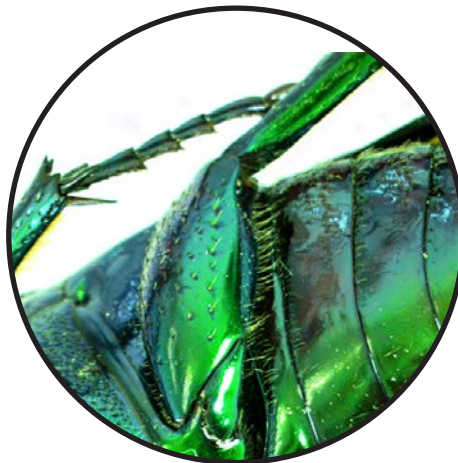
4K HDCAM6B Dimensions



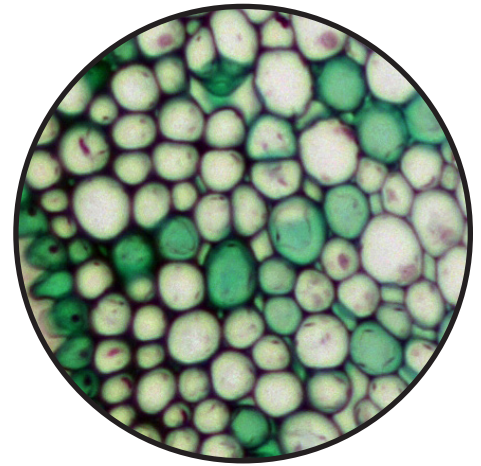
The HD Camera has 1" threads (c-mount) and is made from tough CNC aluminum alloy, ensuring a heavy duty solution. The camera uses a high quality IR-CUT filter to protect the camera sensor.
Dimensions: 65mm (2.56") x 78mm (3.07") x 98.3mm (3.87")



Silk Fibers



June Bug



Privet Leaf c.s.

4K HDCAM6B Microscope Camera Specifications

Image Sensor	1/1.8" Sony IMX678(C) (7.68 x 4.32)
Pixel Size	2.0 x 2.0µm
Resolution	3840 x 2160
Frame Rates	HDMI: 60fps @ 3840 x 2160 4K resolution
Binning	1x1
Exposure	0.19ms~1000s
Output	HDMI
	GE (Gigabit Ethernet)
	USB3.0
Sensitivity	1364 mv with 1/30s
Power	DC12V/2A, power on/off switch.
HDMI Controls	USB Mouse for on-screen control.
	8 Megapixel Image Capture to SD Card or USB Flash Drive, Video recording 72fps to SD Card or USB flash drive.
	Camera control panel: Exposure, Gain, White Balance, Color, Sharpness
	Toolbar: Zoom, Mirror, Comparison, Freeze, Crossline, On-Monitor Measuring
USB Controls	White Balance, Auto White Balance, ROI White Balance
	Capture still images or motion video with software
	USB works with full use of software on PC or Laptop (will not work with MAC)
GE (Gigabit Ethernet) Controls	High speed live streaming video
Software Features	Image capture, still or motion video
	Adjustment of white balance, color, frame rate, exposure, gain, flip, sampling, ROI, histogram, darkfield correction.
	Annotation
	Measurement and Calibration: angles, lines, diameter, polygon, etc.
Operating System for Software (USB)	Windows 7, 8, 10, 11 (32 & 64 bit), Linux
PC Requirements (USB)	CPU equal or greater than Intel Core2 2.8GHz
	Memory: 4GB or more
	USB3.0 Port, Display of 19" or larger, 4K resolution
Operating Temp	-10~50°C
Storage Temp	-20~60°C
Operating Humidity	30-80%RH
Storage Humidity	10-60%RH
Size	98.3mm (3.87") W x 65mm (2.46") D x 78mm (3.07") H, 1lb.
Connection	C-Mount Threads