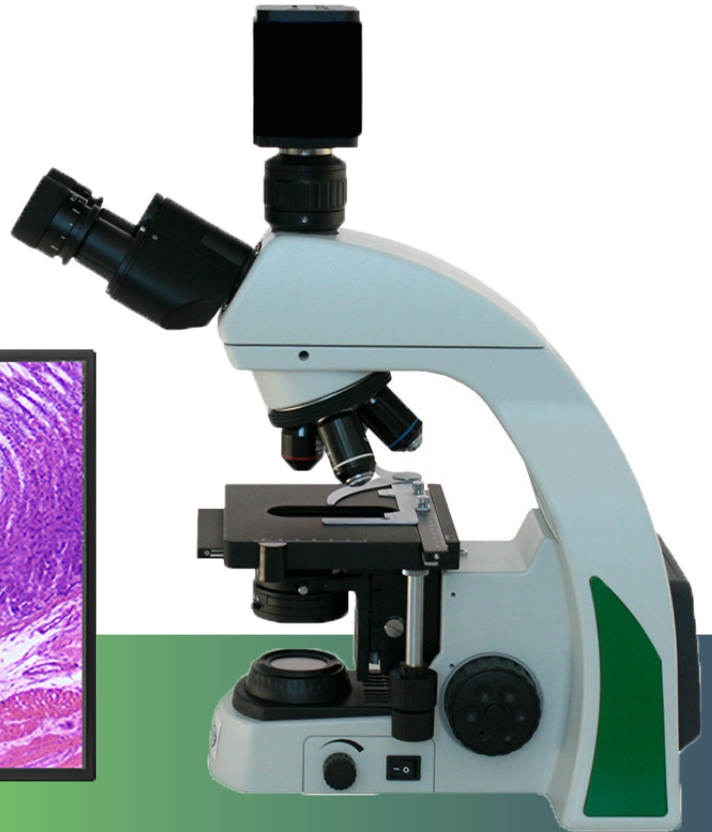
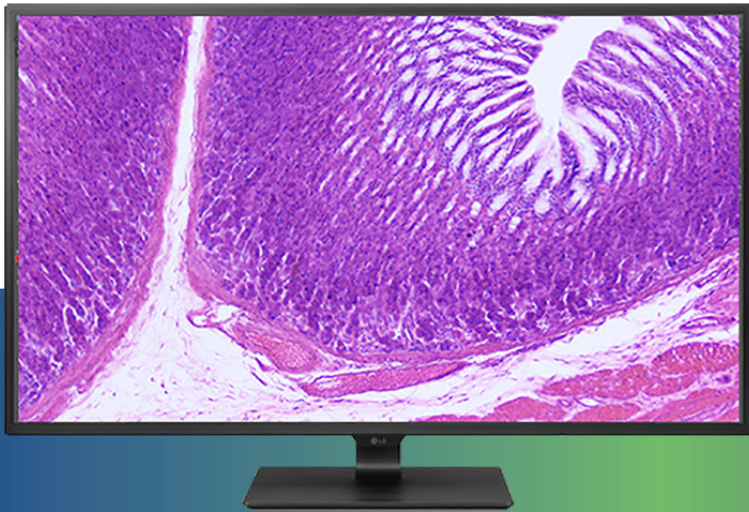




## HDCAM7 High Definition 4K Microscope Camera 8 Megapixel Image Capture

---



# 4K HDCAM7 Camera Features

## Interface

With HDMI and USB this 4K high definition camera provides options for users.

- HDMI Output
- USB Output (USB Flash Drive Capture Option)
- SD Card Capture Option



## Accessories

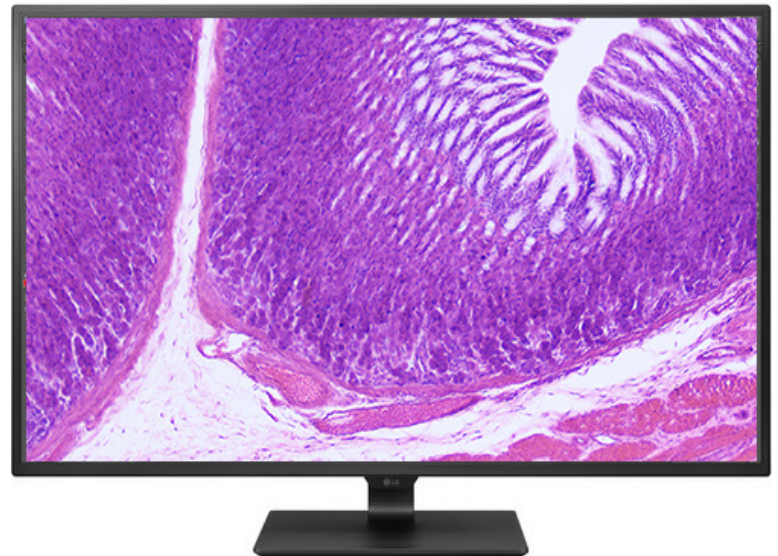
4K High Definition camera includes:

- HDMI Cable
- USB Cable
- Power Cord
- SD Card
- Software
- USB Mouse for On-Screen HDMI Control

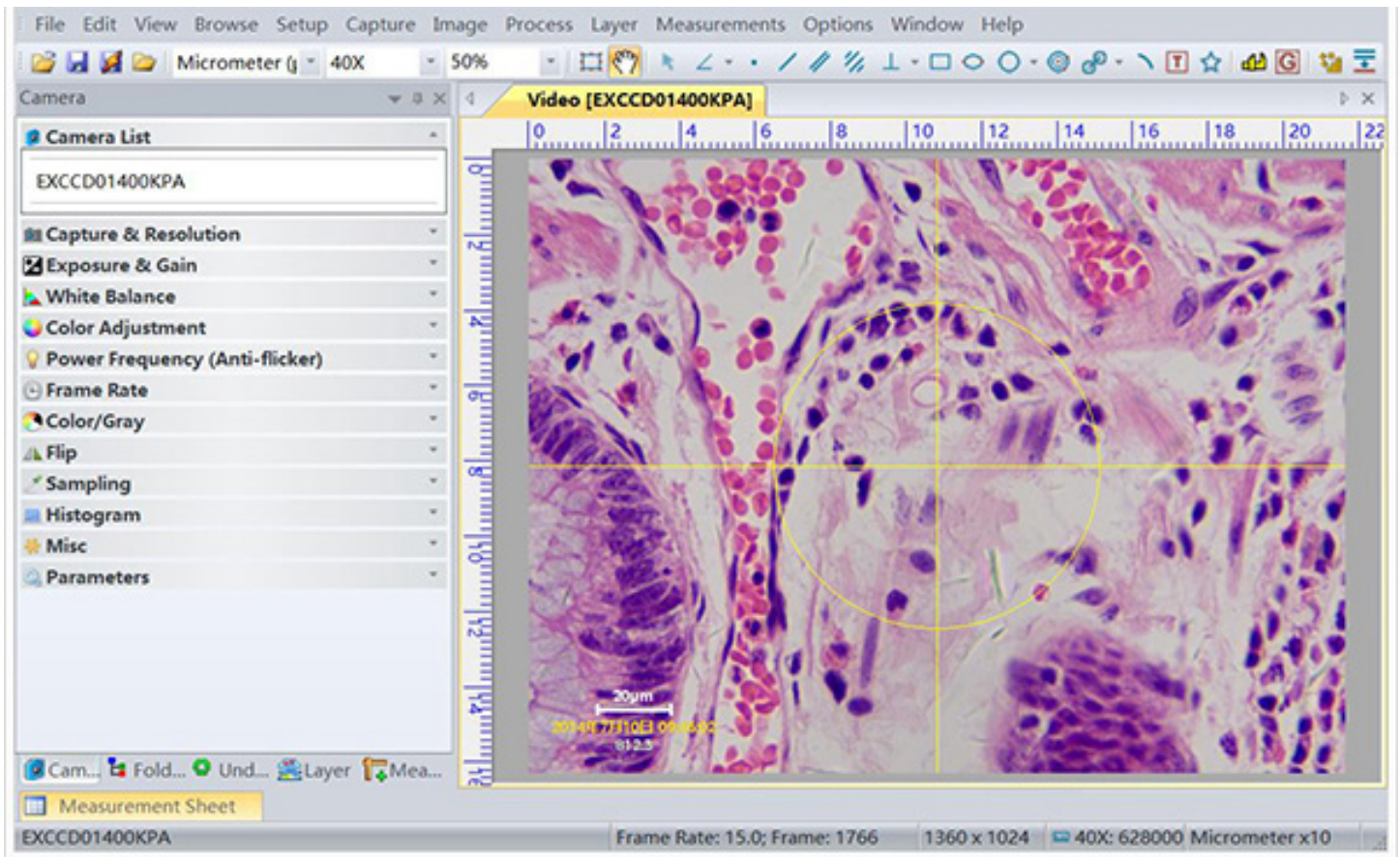


## 4K HDCAM7 Monitor

Connect the HDCAM7 to a 4K capable monitor to experience the true 4K resolution.

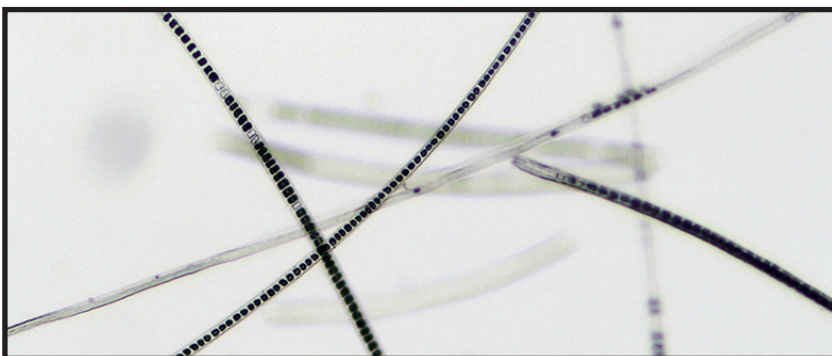


## USB Computer Software Features

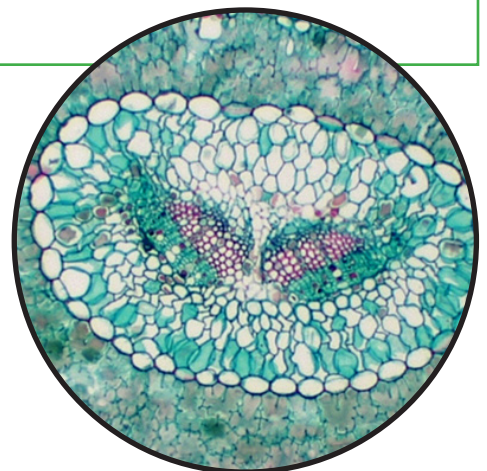


When using the camera with USB connection to a desktop or laptop computer, software features include:

- Image Capture (8 Megapixels), Motion Video Capture (PC only, will not work with MAC)
- Calibration & Image Measurement: Angle, Line, Circle, Ellipse, Rectangle, Arc, Polygon, etc.
- Image Stitching
- Exposure, Gain, White Balance, Color Adjustment, Frame Rate

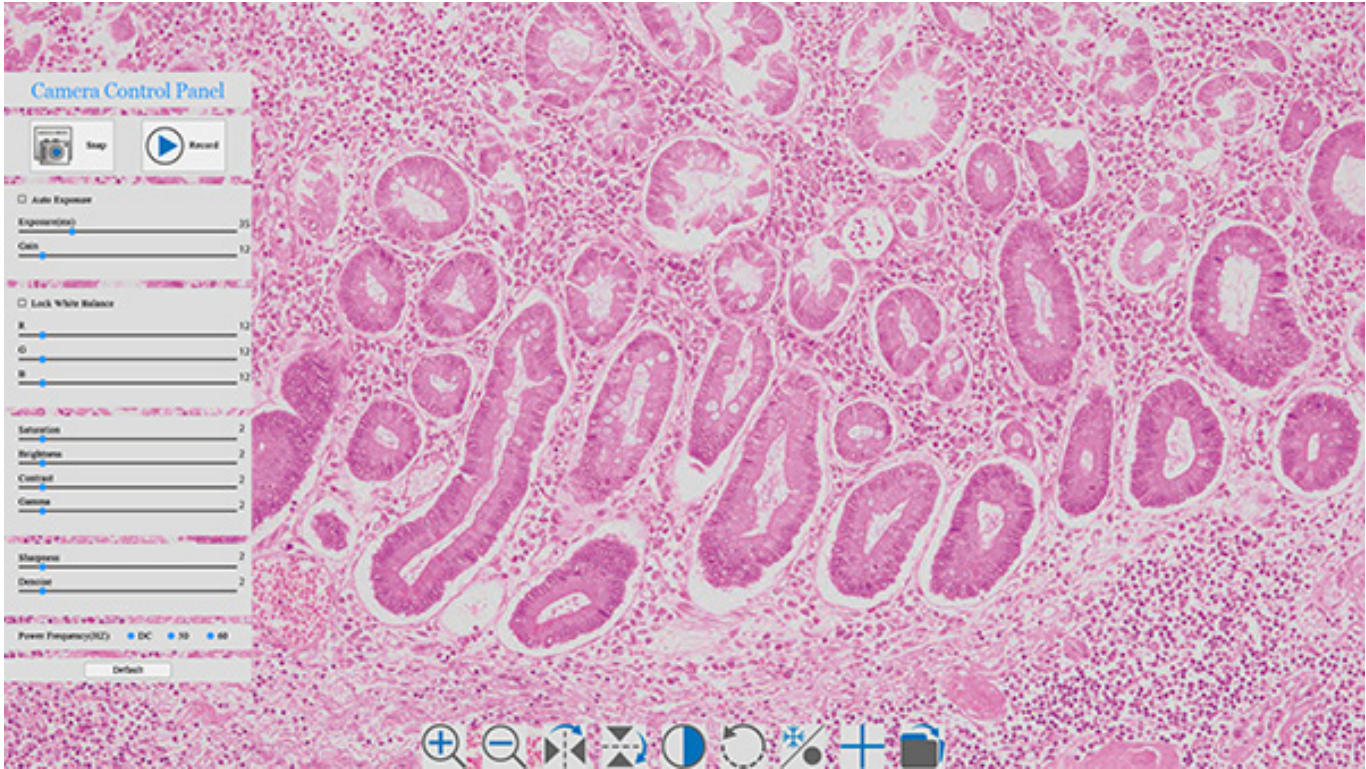


**Rabbit Hair**



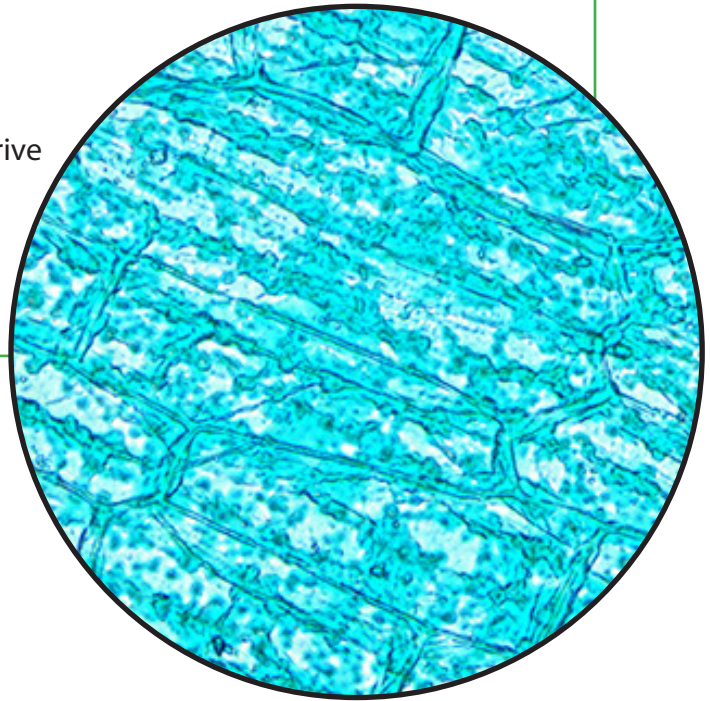
**Pine Leaf c.s.**

## HDMI On-Screen Menu and Features

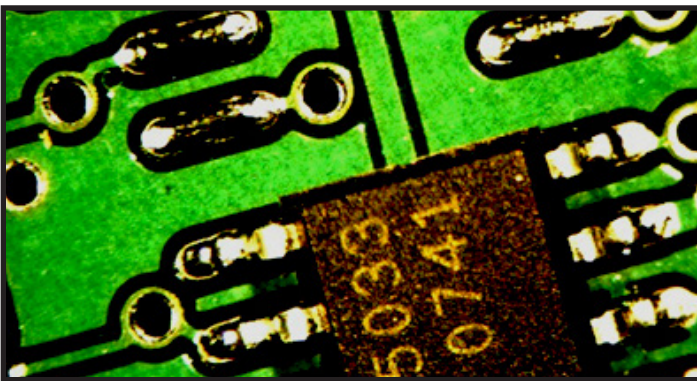


When using the camera with a monitor, on-screen adjustments can be made with the mouse:

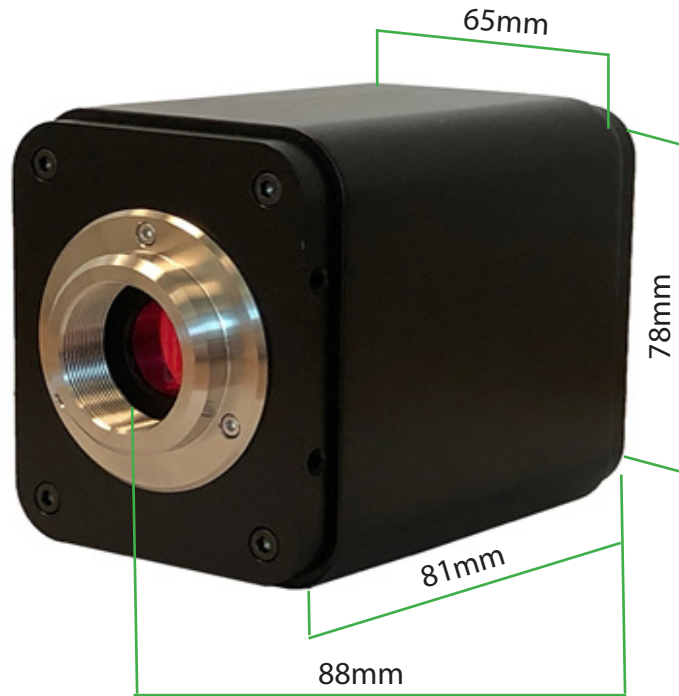
- Measurements
- Exposure, Gain, White Balance, Saturation, Brightness
- Sharpness, Denoise, Contrast, Gamma
- Image capture (8 Megapixels) to SD Card or USB flash drive
- Video capture to SD Card
- Image rotation
- Zoom
- Cross-Line Imposed Upon Image



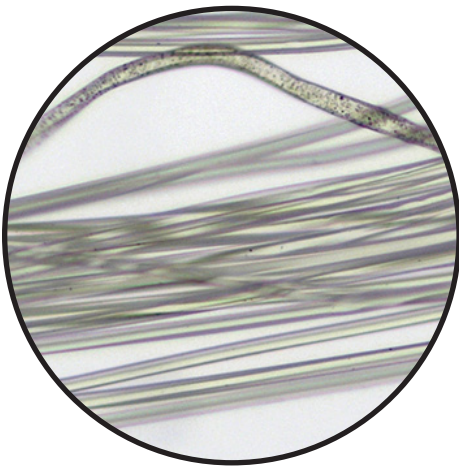
**Hydrilla Verticillata**



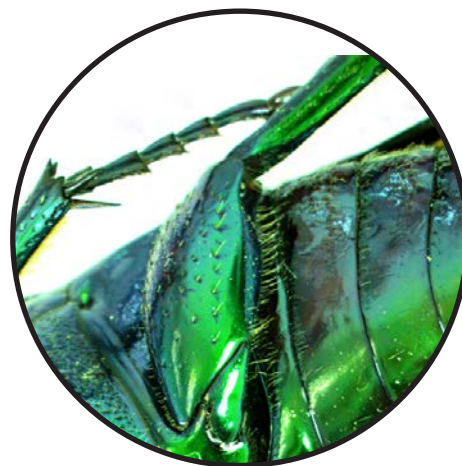
**Printed Circuit**



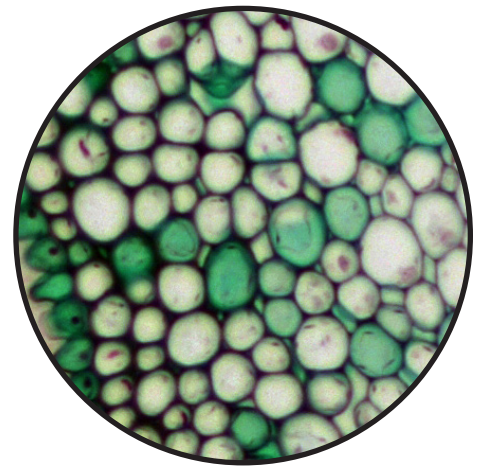
The HD Camera has 1" threads (c-mount) and is made from tough CNC aluminum alloy, ensuring a heavy duty solution. The camera uses a high quality IR-CUT filter to protect the camera sensor.



**Silk Fibers**



**June Bug**



**Privet Leaf c.s.**

# 4K HDCAM7 Microscope Camera Specifications

Image Sensor	1/1.8" Exmor Sony STARVIS IMX678(C)
Pixel Size	2.0 x 2.0µm
Resolution	3840 x 2160
Frame Rates	HDMI: 30fps @ 3840 x 2160 4K resolution
Binning	1x1
Exposure	0.1ms~1000s
Output	HDMI USB2.0
Sensitivity	505 mv
Power	DC12V/2A, power on/off switch.
HDMI Controls	USB Mouse for on-screen control.
	8 Megapixel Image Capture to SD Card or USB Flash Drive, Video recording 50-60fps to SD Card or USB flash drive.
	Camera control panel: Exposure, Gain, White Balance, Color, Sharpness
	Toolbar: Zoom, Mirror, Comparison, Freeze, Crossline, On-Monitor Measuring
USB Controls	White Balance, Auto White Balance, ROI White Balance
	Capture still images or motion video with software
	USB works with full use of software on PC or Laptop (will not work with MAC)
Software Features	Image capture, still or motion video
	Adjustment of white balance, color, frame rate, exposure, gain, flip, sampling, ROI, histogram, darkfield correction.
	Annotation
	Measurement and Calibration: angles, lines, diameter, polygon, etc.
Operating System for Software (USB)	Windows 7, 8, 10, 11 (32 & 64 bit), Linux, MAC OS X.
PC Requirements (USB)	CPU equal or greater than Intel Core2 2.8GHz
	Memory: 4GB or more
	USB3.0 Port, Display of 19" or larger, 4K resolution
Operating Temp	-10~50°C
Storage Temp	-20~60°C
Operating Humidity	30-80%RH
Storage Humidity	10-60%RH
Size	88mm (3.46") W x 65mm (2.46") D x 78mm (3.07") H, 1lb.
Connection	C-Mount Threads